

## Recommended Tools for Assemble Cabinets



Screw Driver



Senco Fastener



Nail Gun



Stapler



Rubber Hammer



Clamp



Glue Gun or Wood Glue

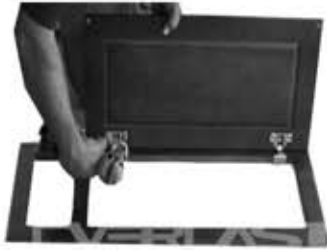


Spare Screws

## Instruction For the Following Styles:

Cherry Glazed Maple  
 Honey Maple  
 French Antique Glazed Maple  
 Vanilla Glazed Maple

Chocolate Glazed Maple  
 Mocha Glazed Maple



1. Remove the door panel from frame. It is best to re-install the door after the installation of all cabinets.



2. Place the side panel to the groove of the frame.



3. Secure the side panel to the frame using 1/4" wide by 3/4" deep staples every 6".



4. If you are using hot glue or wood glue, make sure to apply a thin layer of glue over the connection of the side panel and the frame.



5. Repeat Steps 3 and 4 with the other side panel.



6. Slide the bottom panel through the grooves and staple every 4-6" and apply hot glue or wood glue.



7. Slide in the back panel starting from the bottom sliding towards the top.



8. Make sure both panels are aligned. Otherwise, it will be very difficult to level the plywood for the countertop.



10. Staple the side panels to the cabinet for extra reinforcement. Use either 3/4" or 1" staples. Use two staples on each side of the cabinet.



9. Staple the bottom of the back panel to secure it to the outer frame (use 3/4" staples every 4-6")



11. Locate the toe kick.



12. Staple the toe kick to the bottom of the cabinet using 3/4" staples every 4-6".



13. The cabinet is now ready for installation..

## Instruction For the Following Styles:

Cherry Glazed Maple  
Honey Maple  
French Antique Glazed Maple  
Vanilla Glazed Maple

Chocolate Glazed Maple  
Mocha Glazed Maple



1. Locate all of the following parts:
  - a. Bottom panel
  - b. Two side panels (long ones)
  - c. Back panel
  - d. Front panel (drawer face)



2. Connect the side panel to front panel.  
Optional: Use carpenters glue to glue the dove tails.



3. Connect the second panel.



4. Slide in the bottom panel to the groove on the bottom.



5. Join the back panel. Make sure that the notch and the pre-drilled holes are facing down.



6. Locate the pre-drilled holes on the side of the cabinet. Connect the drawer guides using a screwdriver.



7. Make sure the front of the drawer guides align with the back side of the face frame. In the photo the left guide is installed correctly. The right one is NOT CORRECT because the front of the guide passes the back side of the face frame.



8. Slide drawer until the pins are in the holes.



9. Insert the pins in the holes.  
Note: The round plate under the pin can be used for easy adjustments.

Great! Your drawer is done.

## Instruction For the Following Styles:

Cherry Glazed Maple  
 Honey Maple  
 French Antique Glazed Maple  
 Vanilla Glazed Maple

Chocolate Glazed Maple  
 Mocha Glazed Maple



1. Disconnect door from frame in order to prevent damages during assembly and installation.



2. Locate the side panels. Insert side panel into the groove in the frame.



3. Secure the side to the frame by using a staple gun (3/4" Deep by 1/4" Wide staples are recommended). Staple the side every 6".



4. For increased durability use a glue gun (hot glue) to glue the joint of the frame and the side panels together. Make sure to leave a thin, even layer and to wipe off the excess glue after it is dry.



5. Repeat Steps 3 and 4 with the other side panel.



6. Locate the identical top and bottom panels. Insert each of them in the grooves of the side panel. Make sure the notch on the side of the panels faces the frame.



7. Do NOT staple the top and bottom panels from the inside. Staples and glue will be used from the outside (see next step).



8. After the panels are inserted in the grooves. Secure them using staples every 4-6". Repeat this step with the other panel.



9. Add a layer of hot glue. Repeat this step with the other panel.



10. Locate both shelves (left) and the back panel (right).



11. Slide the back panel in the grooves.



12. Make sure the back panel is inserted properly.



13. Locate the shelf holders (left) and the screws to the back (right). Use four screws to secure the back panel to the frame (in each pre-drilled hole).



14. Using a regular Phillips Head Screwdriver, secure all four screws.



15. Use two staples (either 3/4" or 1" staples) to secure the side of the cabinet. Do not staple more than 1/2" below the top or you will "miss" the back plywood piece.



16. Repeat this process with each side (four in total).

Great! Your cabinet is now ready. Remember to re-install the doors and shelves after installation in order to avoid damages.



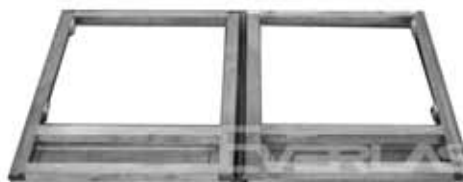
## Instruction For the Following Styles:

Cherry Glazed Maple  
 Honey Maple  
 French Antique Glazed Maple  
 Vanilla Glazed Maple

Chocolate Glazed Maple  
 Mocha Glazed Maple



1. Locate the two face frames and doors



2. Remove both doors from the frame. Do NOT remove the drawers face and they are decorative (fake).



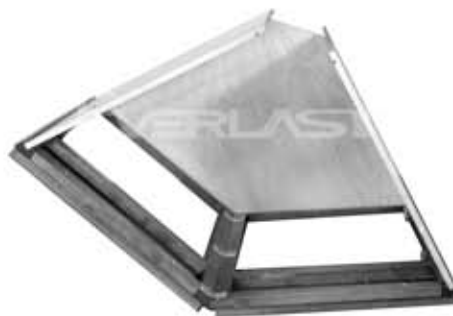
3. Connect the two face frame together using the supplied 3 angled brackets.



4. Insert the bottom panel in the slots.



5. Connect the side panel to the back panel. Secure the panels using staples between the side panel the and bottom panel.

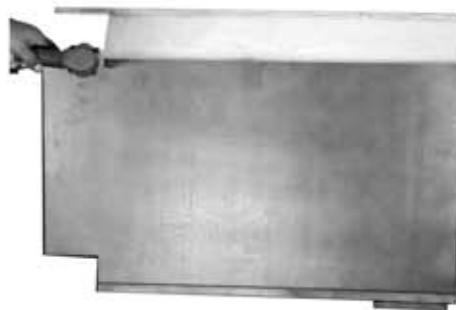


6. Repeat the previous step with the other side panel.

## Instruction For the Following Styles:



7. Slide in the back panel.



8. Reinforce the cabinet structure using staples every 6" between the side panels and the back panel.



9. Locate the two toe-kick pieces and join them together using staples as shown in the photo.



10. Secure the toe-kick using staples (two in each side).



11. Re-connect the two front doors and install the shelf.  
Your cabinet is now ready!

## Instruction For the Following Styles:

Cherry Glazed Maple  
 Honey Maple  
 French Antique Glazed Maple  
 Vanilla Glazed Maple

Chocolate Glazed Maple  
 Mocha Glazed Maple



1. Locate the front face frame



2. Locate the two top support pieces.



3. Insert the top support pieces into the pre-drilled holes in the front face frame.



4. Connect the top panel to the top support pieces using four screws in the pre-drilled holes on the top support pieces.



5. Close up on the way to connect the top panel to the top support pieces.



6. Connect the side panel to the front face frame using two brackets as shown in the photo.



7. Connect the other side panel to the front face frame using two additional brackets.



8. Connect the back side panel to the top panel using three screws in the pre-drilled holes.



9. We recommend reinforce the structure of the cabinet using 3/4" staples as shown in the photo (to connect the back side panel to the front side panel). You may also use the supplied brackets instead of staples to complete this task.



10. Repeat the last two steps with the other back side panel.



11. Slide in the back panel and secure with four screws in the pre-drilled holes.



12. Slide in the door into the slots starting from the bottom to the top.



13. Flip the cabinet and make sure the doors opens and closes properly.



14. Your cabinet is now ready!



**Crown Moulding (ACM)**



**Tall Filler/Molding (CM)**  
\*Use for filler or molding purpose



**Fluted Filler (PCVFF)**  
\*Use for molding filler and other decor purpose

**1 Refrigerator Panel**  
=  
**One 3" filler flat front**  
+  
**One 24"-27" deep**



**Chair Rail Molding (FSM)**  
\*Use with crown molding to make unqiue moldings.



**Scribe Molding (SM)**  
\*Use for filler or molding purpose.



**Light Rail Molding (TLR)**  
\*Could go under the wall cabinets.

